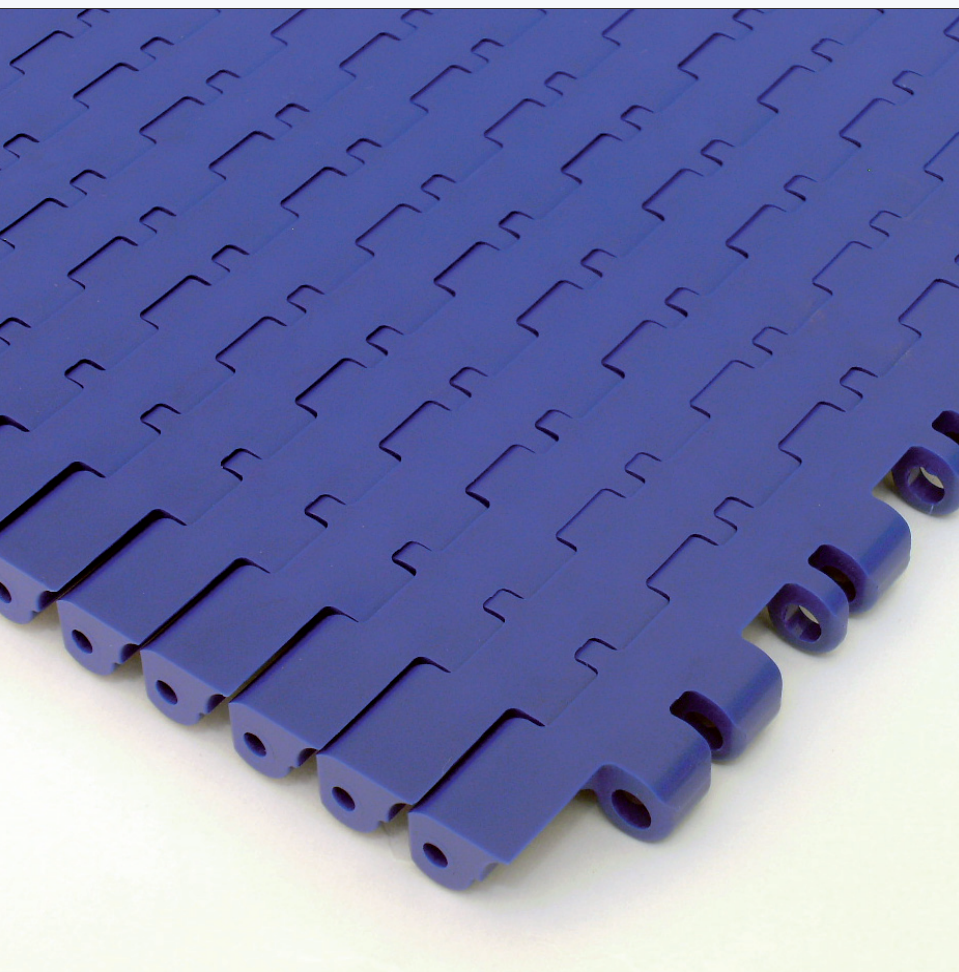


**SERIES C12 FLAT TOP**

Bidirectional, with a 12 mm pitch, it is ideal for small product transfers at high speed.



Its small pitch, as well as the specific drive sprocket designed for it, enables this belt to be used at very high speeds.

It is manufactured in polypropylene, polyethylene and polyacetal obseing the International Regulations to be used in food processes.

***SERIES***

**C12**

**FLAT TOP**



**high speed conveying**

**very small  
product transfer**

**metal detectors**

**container handling**

**AFHER EUROBELT S.A.**

Topacio,41

47012 Valladolid

Spain

Phone: +34 983 217 480

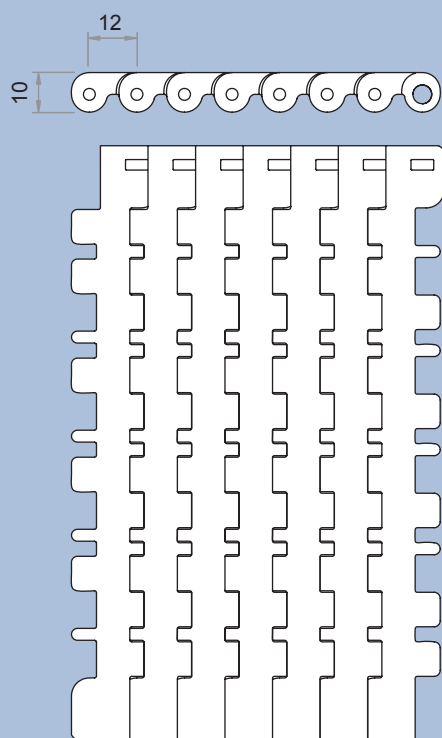
Fax: +34 983 217 481

email: [after@eurobelt.com](mailto:after@eurobelt.com)

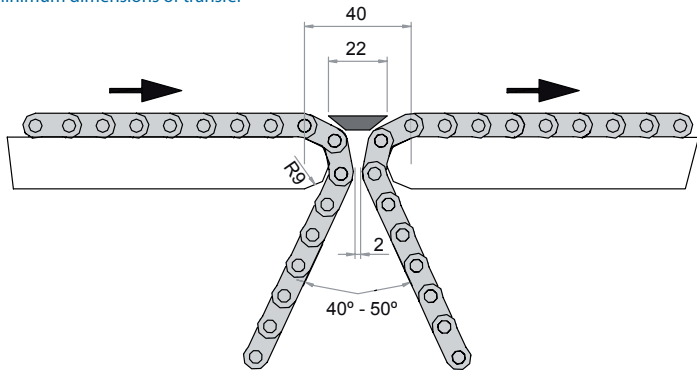
web: [www.eurobelt.com](http://www.eurobelt.com)

# SERIES C12 FLAT TOP

## BELT DATA

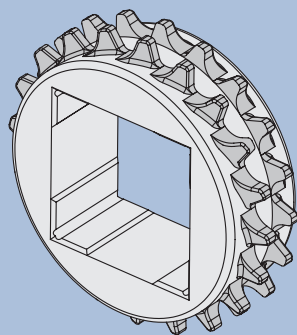


Minimum dimensions of transfer



	Material of the belt	Material of the rod	Belt strength (kg/m)	Temperature range (°C)	Belt weight (kg/m²)	Available colours in stock
<b>Pitch</b> 12 mm	Polypropylene	Polypropylene	530	+1 to +104	6.07	White - Grey - Blue
<b>Open area</b> 0 %	Polyethylene	Polyethylene	300	-50 to +65	6.38	Natural - Blue
<b>Belt width</b> Increments of 25 mm	Polyacetal	Polypropylene	1,450	+1 to +90	8.61	Blue
	Polyacetal	Polyethylene	1,050	-40 to +65	8.65	Blue

## ACCESSORIES [SPROCKETS]



N° of teeth T	Ø Pitch	Bore for square shaft (mm)	Bore for square shaftb (inch)	Hub width
11	42.59	20	3/4"	25
20	76.7	40	1.5"	
26	99.55	40	1.5"	
31	118.61	40 - 60	1.5" - 2.5"	
40	152.94	40 - 60	1.5" - 2.5"	



### AFHER EUROBELT S.A.

Topacio,41 47012 - Valladolid (Spain)

Phone: +34 983 217 480 Fax: +34 983 217 481

e-mail: afher@eurobelt.com

web: www.eurobelt.com

DISTRIBUTOR:



**SERIES C12 FLUSH GRID**

Bidirectional, with a 12 mm pitch, it is ideal for small product transfers at high speed.



With a 12 mm pitch you will be able to carry out product transfers at high speed in minimum turn diameters.

Its open-and-closed link structure, shaping a kind of knot, provides a great load capacity.

Its design with the rod in view and its extraordinary open surface implies a great easiness for cleaning.

***SERIES***

**C12**

**FLUSH GRID**



**high speed conveying**

**very small  
product transfer**

**metal detectors**

**container handling**

**AFHER EUROBELT S.A.**

Topacio,41

47012 Valladolid

Spain

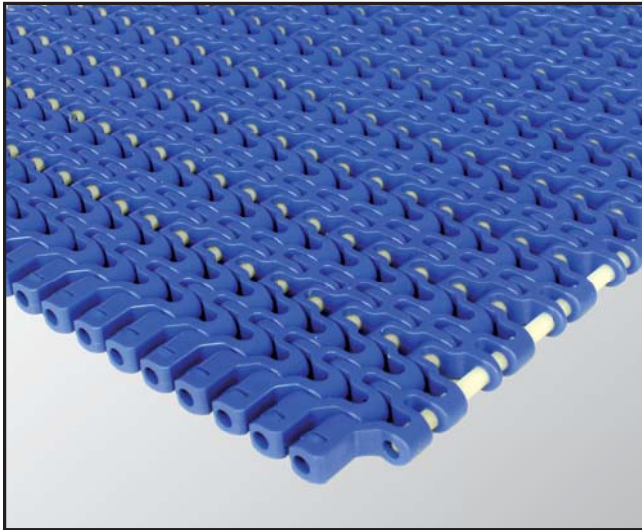
Phone: +34 983 217 480

Fax: +34 983 217 481

email: [after@eurobelt.com](mailto:after@eurobelt.com)

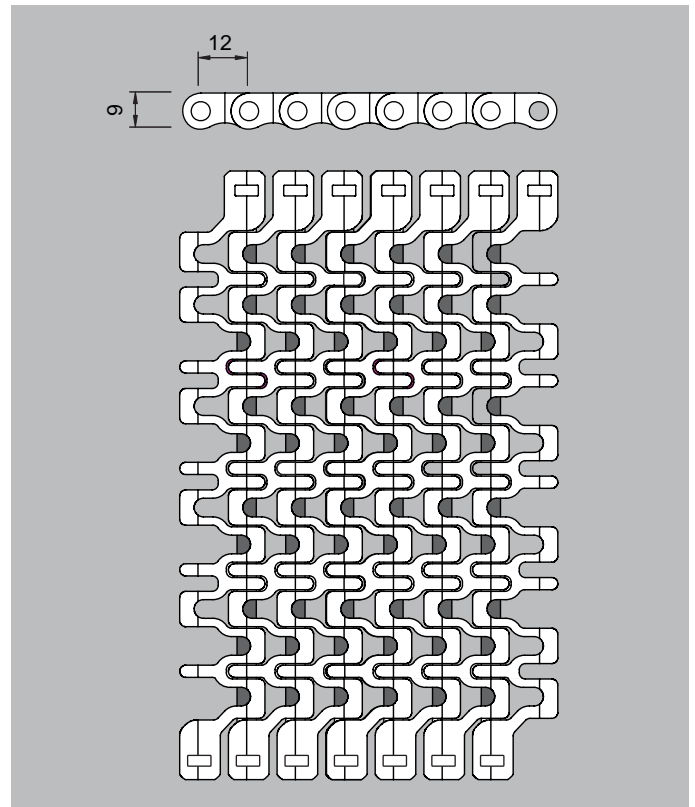
web: [www.eurobelt.com](http://www.eurobelt.com)

## SERIES C12 FLUSH GRID



Bidirectional, with a 12 mm pitch, it is ideal for small product transfers at high speed.

It is manufactured in polypropylene, polyethylene and polyacetal obseing the International Regulations to be used in food processes.

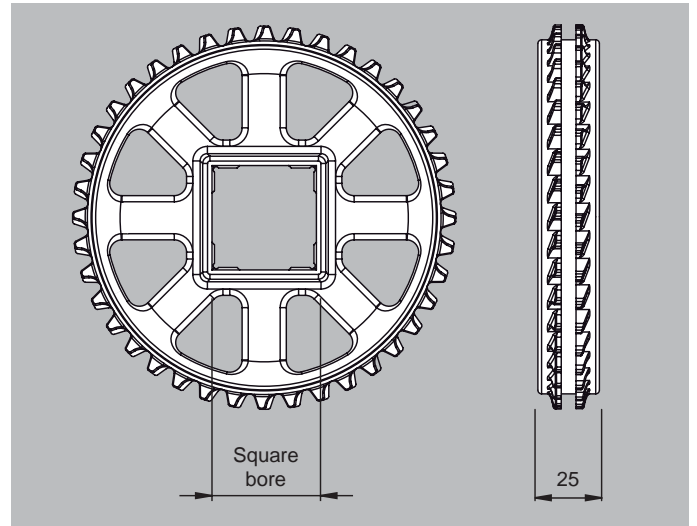
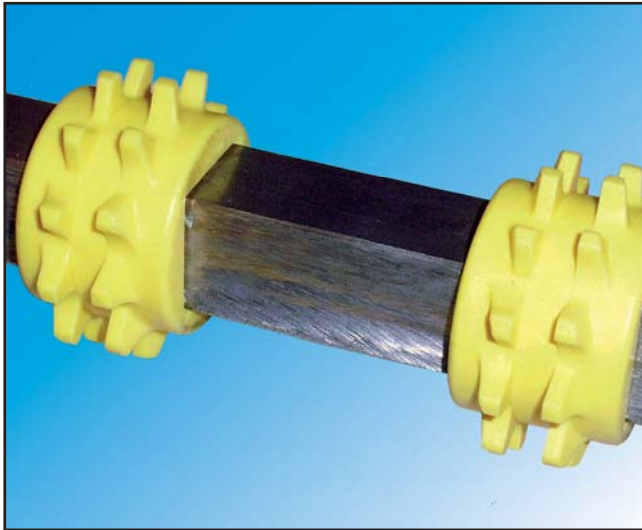


Pitch	12 mm
Surface	Flush Grid
Open area	26 %
Thickness	9 mm
Drive system	Hinge
Belt width	Multiples of 25 mm
Advised minimum width	150 mm
Rod diameter	Ø 4.6 mm
Retention system	Cap

Material of the belt	Material of the rod	Belt strength (kg/m)	Temperature range (°C)	Belt weight (kg/m²)	Available colours in stock
PP - Polypropylene	PP - Polypropylene	980	+1 to +104	4.60	[W] - [G]
PE - Polyethylene	PE - Polyethylene	550	-50 to +65	4.75	[N]
AC - Polyacetal	PP - Polypropylene	1,950	+1 to +90	6.50	[N] - [B]
AC - Polyacetal	PE - Polyethylene	1,400	-40 to +65	6.54	[N] - [B]

Colours: [W] White - [G] Grey - [B] Blue - [N] Natural

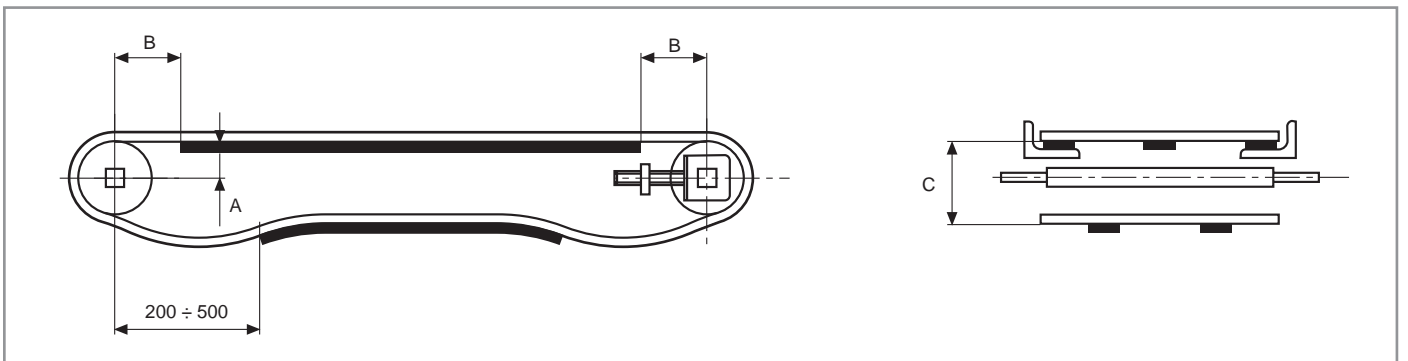
## ACCESSORIES [SPROCKETS]



N° of teeth T	Ø Pitch	Bore for square shaft		Hub width	A	B max.	C
		mm	inch				
11	42.59	20	3/4"	25	16	22	41
20	76.7	40	1-1/2"	25	34	35	77
26	99.55	40	1-1/2"	25	45	40	99
31	118.61	40	1-1/2"	25	55	45	119
		60	2-1/2"				
40	152.94	40	1-1/2"	25	72	52	153
		60	2-1/2"				

EUROBELT offers all sprockets in polypropylene, polyacetal and in stainless steel for those applications in which it is required. To calculate the minimum quantity of sprockets required both in the drive shaft and in the idle one, you should divide the belt width (in mm) by 75 mm. This amount must always be odd.

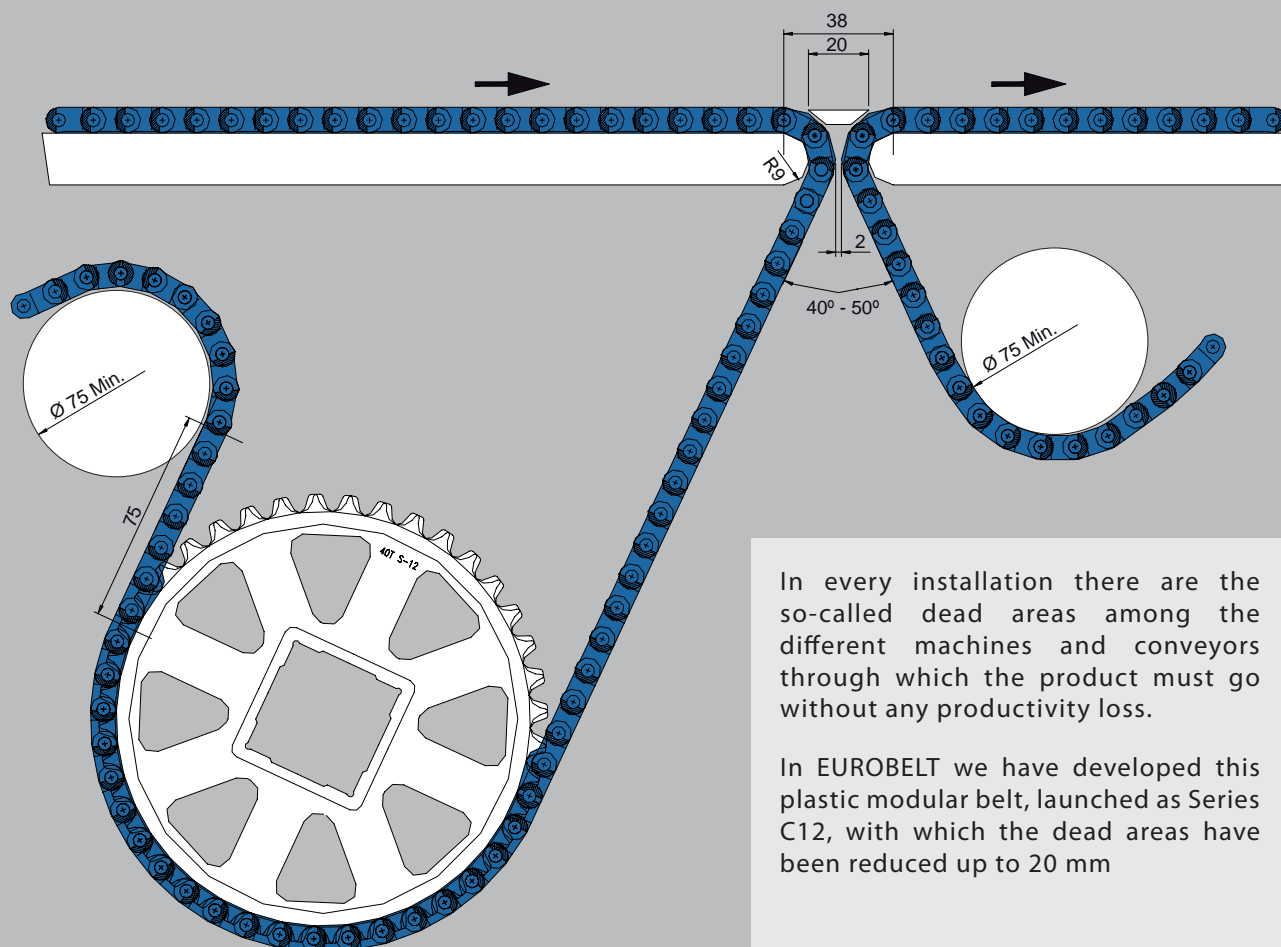
We have plastic sprockets for round shaft with and without keyway.



A	Distance between the sliding surface of the belt and the centre of the shaft.
B	Distance between the vertical of the shaft centre and the beginning of the sliding surface.
C	Recommended distance between the sliding surface of the belt and supports of the return way.



# SERIES C12



In every installation there are the so-called dead areas among the different machines and conveyors through which the product must go without any productivity loss.

In EUROBELT we have developed this plastic modular belt, launched as Series C12, with which the dead areas have been reduced up to 20 mm



## ★ EUROBELT ★

**AFHER EUROBELT S.A.**

Topacio, 41 47012 - Valladolid (Spain)

Phone: +34 983 217 480 Fax: +34 983 217 481

email: [after@eurobelt.com](mailto:after@eurobelt.com)

web: [www.eurobelt.com](http://www.eurobelt.com)

[D1-2010]

DISTRIBUTOR: